

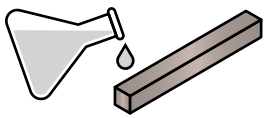
# MAK-A-KEY®

**PRECISION KEY STOCK**

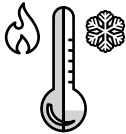
**Cut & Fit™**

## Nickel-Copper Alloy / Monel® 400

### BENEFITS



CHEMICAL & CORROSION  
RESISTANCE



WELL-SUITED FOR EXTREME  
TEMPERATURES

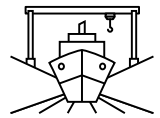


SALTWATER/UNDERWATER  
ENVIRONMENTS

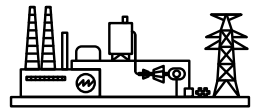
### POPULAR SIZES IN STOCK!

Additional sizes up to 12 feet in length are available as special order.  
Contact our friendly sales team today for details.

### COMMON APPLICATIONS



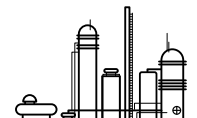
MARINE / SHIPBUILDING



ENERGY PRODUCTION



OIL & GAS



CHEMICAL PRODUCTION



**DFARS COMPLIANT ★ TIGHT TOLERANCES  
READY-MADE TO FIT YOUR KEY WAY!**

**SIZE & LOT NO.  
MARKED ON  
EVERY PIECE**

Size	Nickel Copper Alloy / Monel 400	
	12" Bars	36" Bars
1/8" Square	1001250125-12	1001250125-36
3/16" Square	1001870187-12	1001870187-36
1/4" Square	1002500250-12	1002500250-36
3/8" Square	1003750375-12	1003750375-36
1/2" Square	1005000500-12	1005000500-36



G.L. Huyett's Nickel-Copper Alloy / Monel 400 parts are RoHS and DFARS compliant.

For detailed specifications and tolerances, visit [huyett.com](http://huyett.com).

Prices, materials, dimensions, tolerances, designs, and grades subject to change without notice. © 2020 G.L. Huyett  
MAK-A-KEY® is a trademark of G.L. Huyett. MONEL® is a trademark of Special Metals Corporation.

### UNDERSIZE TOLERANCES

Size	Squares
.0937 – .7500"	+0/- .0020"
LENGTH TOLERANCE FOR 12 - 36" KEY STOCK: +0/- .125"	

Lengths over 3 feet may be subject to a packing charge. Visit [huyett.com](http://huyett.com) or call our friendly sales team today for more details.

**Visit [huyett.com/keystock](http://huyett.com/keystock)**  
to learn more about the benefits and uses  
of Nickel-Copper Alloy / Monel 400  
Key Stock.



785-392-3017 • [sales@huyett.com](mailto:sales@huyett.com)

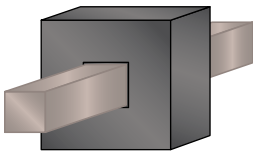
# MAK-A-KEY®

## PRECISION KEY STOCK

Cut & Fit™

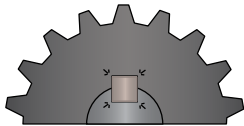
### Production Quality

Key stock, or "bright steel," refers to square and rectangle bars that are drawn to exacting tolerances with sharp corners, perpendicular and parallel sides, and smooth, bright surface finishes.



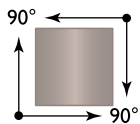
Cold Drawn  
Bright Steel

Manufacturing true key stock to tight tolerances is challenging as tolerances for square and rectangle key stock tend to be more precise than for rounds or other forms because of the desired interference fit into the key way.



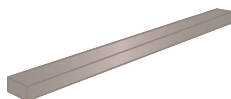
Sharp Corners

During production, as material passes through a die, stresses from cold working are introduced that may cause twisting. To produce superior finished results, G.L. Huyett has supported the development of cold drawing technologies while working in concert with U.S. and international steel mills.

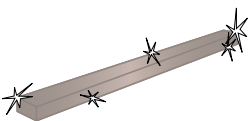


Perpendicular  
Planes

Though harder to draw and more difficult to install, key stock with sharp corners is desired so that the interference fit of the key into the corners of the key way is optimized to reduce bearing stresses.



Straight

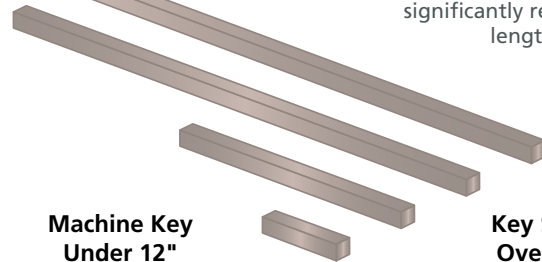


Bright

Key stock is more costly and difficult to produce, but it is near-finished when drawn compared to conventional steel bars. To produce a bright finish, key stock can be treated to produce a surface finish that is more uniform and precise compared to rounds and other forms.

### Key Stock vs. Machine Keys

The terms machine key and key stock are used interchangeably to the point of creating confusion. Technically, the term key stock refers to a stock of material that is one foot or greater in length from which shaft/machine keys are made. Generally, longer lengths are preferred by high quantity users because machine setup time is significantly reduced. Custom lengths are available upon request.



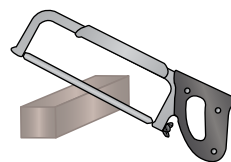
Machine Key  
Under 12"

Key Stock  
Over 12"

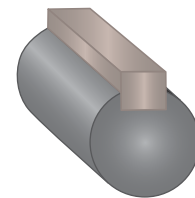
Key stock is available in any length from 1' to 12'

### Cut & Fit Precision Key Stock

A key may be cut from stock in the field and fitted into a key way for aftermarket repairs, or in contract shops that use short production runs.

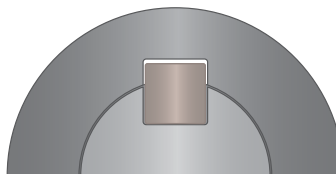


Cut to Length



Fit into Key Way

### ANSI/ASME B17.1 Keys & Key Way Class 1 Fit



Sometimes called a clearance fit, the key width will be slightly smaller than the key way allowing the shaft and component piece to slide over each other.



Visit [www.huyett.com/MyAccount/OrderHistory](http://www.huyett.com/MyAccount/OrderHistory) to download  
**FREE\* MTRs and CofCs** from your Account Order History.



785-392-3017 • [sales@huyett.com](mailto:sales@huyett.com)

