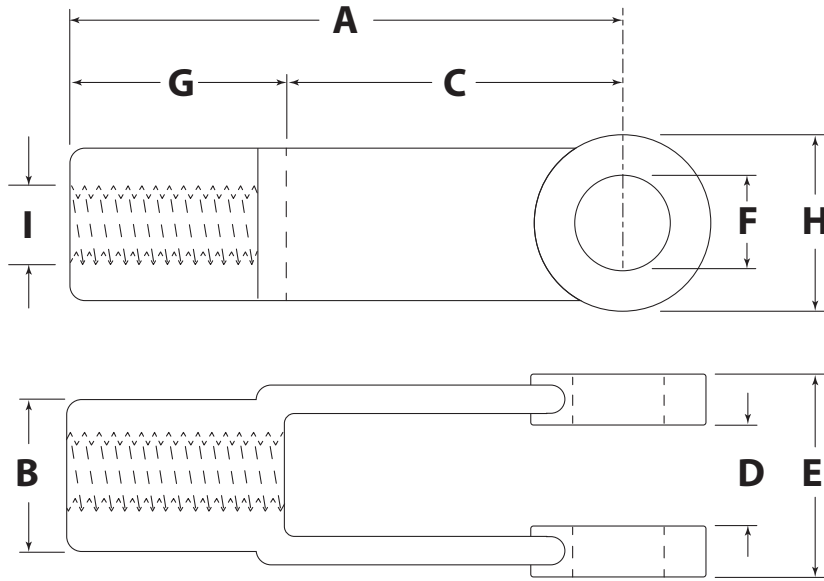


YOKE END

PART# _____



Dimension	Description	Value	Tolerance
A	Body Length		Reference
B	Body Width		Reference
C	Effective Length	+/- .010	
D	Inside Opening	+/- .010	
E	Outside Opening	+/- .010	
F	Hole Diameter	1/4" - 7/16": +/- .001 1/2" - 1": +.001 / -.002	
G	Thread Body Length		Reference
H	Outside Diameter	+/- .010	
I	Thread Diameter		Reference

Thread Size/Pitch: _____
 Thread Type: RH / LH
 Material: _____ 1020 Carbon Steel
 Finish: _____
 Other Requirements: _____

For safety information, rated capacities, weight, and safe lifting practices, visit www.huyett.com/LiftingHardware.

DESIGN APPROVAL

1. All prints must be signed and approved **before** production begins.
2. Specials cannot be returned. See terms and conditions at www.huyett.com/terms.
3. Send completed prints to quotes@huyett.com.

NAME: _____

TITLE: _____

DATE: _____

SIGNATURE: _____



1215 E. 8th St.
 Minneapolis, KS 67467
 PH: 785.392.3017 Fax: 785.382.2845
www.huyett.com

Rev.	Date	Comment	Drawn By:

Note: Unless otherwise requested, the drilled or tapped holes on Hot Dipped Galvanized (HDG) parts may be plain or plated at manufacturer's option. If plated the threads will be oversized prior to coating.