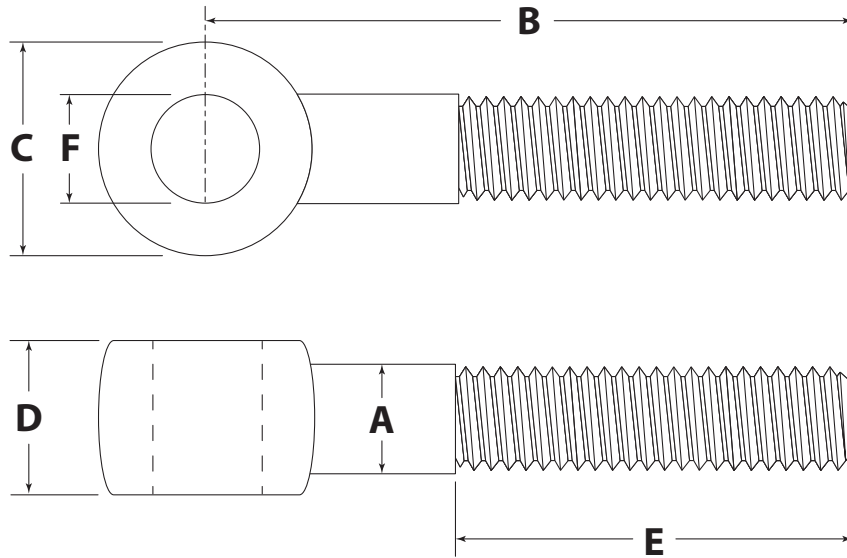


# ROD END

PART# \_\_\_\_\_



Dimension	Description	Value	Tolerance
A	Shank Diameter		Reference
B	Length to Center of Eye		+/- .125
C	Head Diameter		+/- .010
D	Head Thickness		+ 0 / - .010
E	Thread Length		Minimum
F	Hole Diameter		1/4" - 7/16" +.001 / -.001 1/2" - 1" +.001 / -.002

Thread Size/Pitch: \_\_\_\_\_  
 Thread Type: RH / LH  
 Material: \_\_\_\_\_ 1030-1045 Carbon Steel  
 Finish: \_\_\_\_\_  
 Other Requirements: \_\_\_\_\_  
 \_\_\_\_\_  
 \_\_\_\_\_  
 \_\_\_\_\_

For safety information, rated capacities, weight, and safe lifting practices, visit [www.huyett.com/LiftingHardware](http://www.huyett.com/LiftingHardware).

# DESIGN APPROVAL

1. All prints must be signed and approved **before** production begins.
2. Specials cannot be returned. See terms and conditions at [www.huyett.com/terms](http://www.huyett.com/terms).
3. Send completed prints to [quotes@huyett.com](mailto:quotes@huyett.com).

NAME: \_\_\_\_\_

TITLE: \_\_\_\_\_

DATE: \_\_\_\_\_

SIGNATURE: \_\_\_\_\_



1215 E. 8th St.  
 Minneapolis, KS 67467  
 PH: 785.392.3017 Fax: 785.382.2845  
[www.huyett.com](http://www.huyett.com)

Rev.	Date	Comment	Drawn By:

**Note:** Hot Dipped Galvanized (HDG) parts threads will be undersized prior to coating.