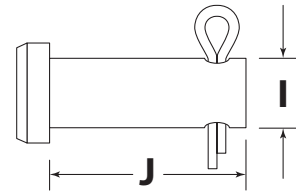
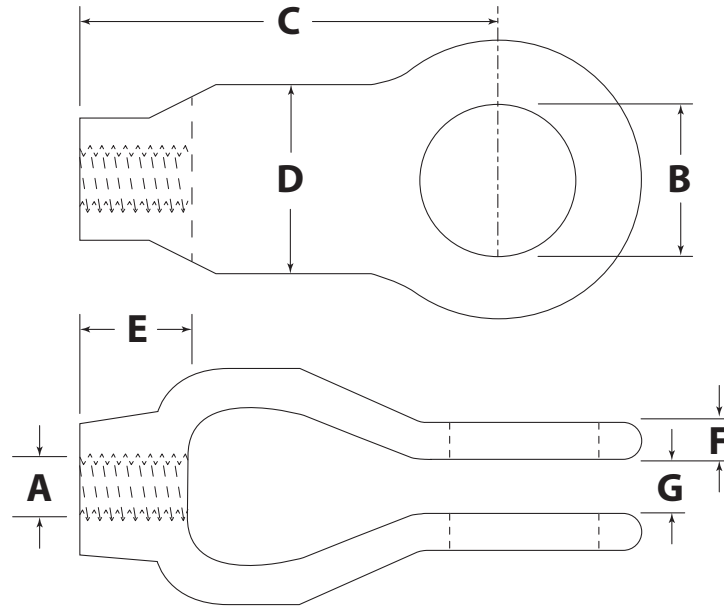


# CLEVIS END

PART# \_\_\_\_\_



Unless otherwise noted,  
Clevis End includes a  
Clevis Pin and Cotter Pin.

Dimension	Description	Value	Tolerance
A	Thread Diameter		Reference
B	Hole Diameter		Reference
C	Length		Reference
D	Width		Reference
E	Thread Depth		Reference
F	Thickness		Reference
G	Grip		Reference
I	Pin Diameter		Reference
J	Pin Length		Reference

Clevis Size (circle): 2 2-1/2 3  
 Thread Size/Pitch: \_\_\_\_\_  
 Thread Type: RH / LH  
 Material: \_\_\_\_\_ 1030-1045 Carbon Steel  
 Finish: \_\_\_\_\_  
 Other Requirements: \_\_\_\_\_

For safety information, rated capacities,  
weight, and safe lifting practices, visit  
[www.huyett.com/LiftingHardware](http://www.huyett.com/LiftingHardware).

# DESIGN APPROVAL

1. All prints must be signed and approved **before** production begins.
2. Specials cannot be returned. See terms and conditions at [www.huyett.com/terms](http://www.huyett.com/terms).
3. Send completed prints to [quotes@huyett.com](mailto:quotes@huyett.com).

NAME: \_\_\_\_\_

TITLE: \_\_\_\_\_

DATE: \_\_\_\_\_

SIGNATURE: \_\_\_\_\_



1215 E. 8th St.  
 Minneapolis, KS 67467  
 PH: 785.392.3017 Fax: 785.382.2845  
[www.huyett.com](http://www.huyett.com)

Rev.	Date	Comment	Drawn By:

**Note:** Unless otherwise requested, the drilled or tapped holes on Hot Dipped Galvanized (HDG) parts may be plain or plated at manufacturer's option. If plated the threads will be oversized prior to coating.